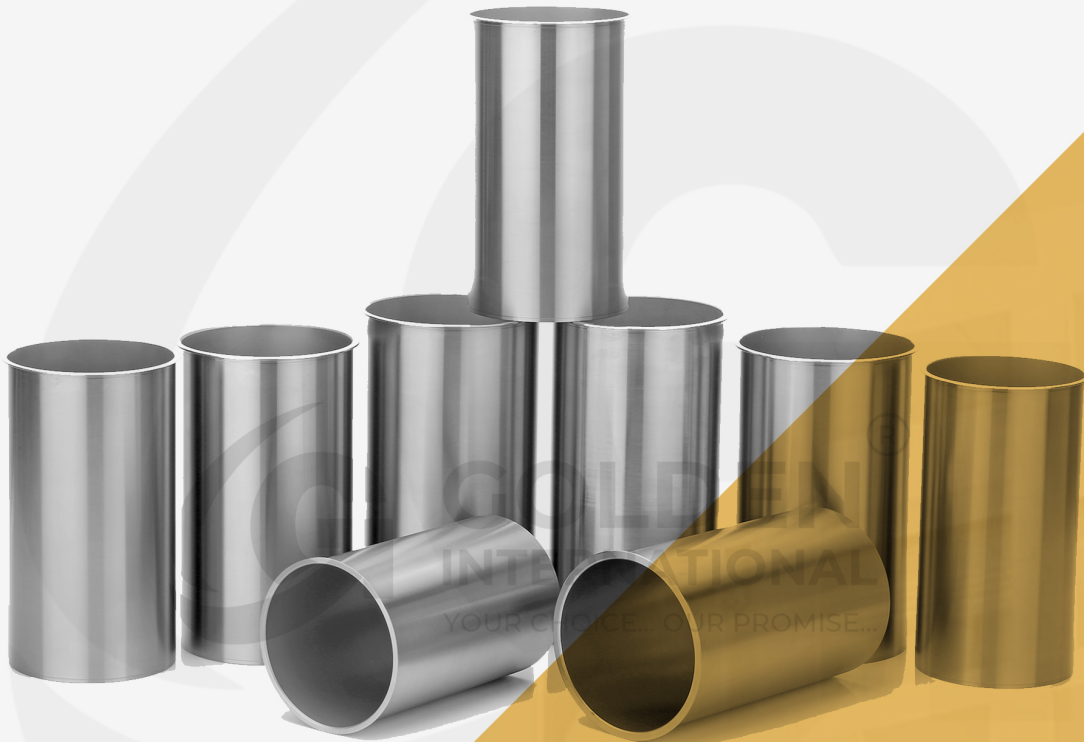

Manufacture & Exporter For CYLINDER LINER & SLEEVES



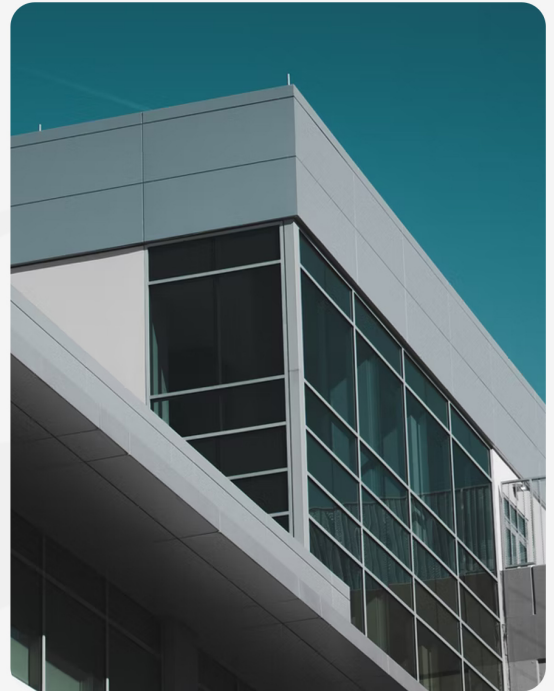
GOLDEN INTERNATIONAL

YOUR CHOICE... OUR PROMISE...

About us...

Golden International assembling and commodity assortment of chamber liners and valve train parts, which incorporates Liners, Cylinder Liners & Sleeves, Chromed Steel Liners, Air Cooled Block. Situated in our city is notable for its designing particularly our fragment of motor parts.

We are having rich experience of just about 30+ years with fantastic history for holding our clients, that has given us generosity in market. We accept to strive to accomplish our objectives for advancement of items and market. We have generally meant to turn into the most aggressive in value, quality and administrations.



Chrome Steel Liner

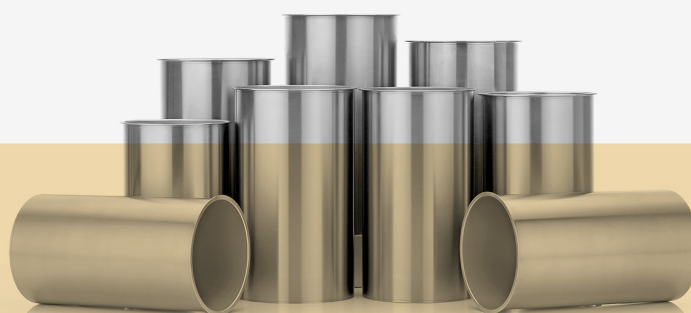
Rich involvement with Manufacturing of Cylinder Liners we are utilized to convey the best Stainless Steel Sleeves as well. We are advertising this reach in fluctuated redid particulars, to meet the variegated prerequisites of our clients. This reach is generally recognized on the lookout for its fantastic exhibition and study development. Our clients can profit this reach in differed sizes, plans and custom-form models as standard their necessities from us

The vast majority of the steel sleeve by direct steel material. The completed sleeve is not difficult to machine and offers extraordinary strength and sturdiness contrasted with pliable iron or Centrifugal projecting. It is very essential to check obstruction fit. Since sleeves are spine less, a tight fit holds the sleeve back from going up and down in the drag when the motor arrives at working temperature. Amalgam steel offer unrivaled elasticity with productive and speedy hotness move. One thing that should be tended to is the warm effectiveness of a sleeve and the kind of square into which it is introduced.

Condition of workmanship Manufacturing and foundation, we offer our clients a profoundly sturdy scope of Stainless Steel Sleeves. These items are produced by utilizing quality tried natural substance that makes the siphons dependable and protected to utilize. These sleeves are powerful in keeping the engine cool by compelling water to stream over the outer layer of siphon engine. Inferable from its high strength and consumption opposition, it is generally utilized in car industry.

◀ Chrome Cylinder Liners

NO.	OEM NO.	MODEL	CLY.	ID	OD	CD	CT	LENGTH
1	9-11261-224-0	C-190-3R	4	86.040	88.000	94.000	0.900	163.300
2	9-11261-230-0	C-240	4	86.040	88.000	94.000	0.900	178.500
3	9-11261-230-0	C-221	4	83.050	86.000	92.000	1.400	174.500
4	5-11261-015-0	C-223	4	88.000	90.000	95.000	0.900	163.000
5	8-94110-144-0	4JA1	4	93.050	95.000	101.000	0.900	156.000
6	8-94247-861-0	4JB1	4	93.050	95.000	101.000	0.900	181.000
7	8-97176-702-0	4JG2	4	95.440	97.000	102.300	1.100	178.600
8	8-97176-702-0	4JH1-TC	4	95.440	97.000	102.300	1.100	178.600
9	5-11261-802-0	4BA1	4	98.000	101.000	108.000	1.400	180.500
10	1-11261-118-0	4BB1	4	102.040	105.000	112.000	1.400	204.000
11	5-12261-014-0	4BC1	4	102.040	105.000	112.000	1.400	187.000
12	5-12261-014-0	4BC2	4	102.040	105.000	112.000	1.400	187.000
13	1-11261-118-0	4BD1	4	102.040	105.000	112.000	1.400	204.000
14	1-11261-118-0	4BD2-T	4	102.040	105.000	112.000	1.400	204.000
15	5-11261-016-2	4BE1	4	105.040	107.000	113.000	1.400	187.000
16	1-11261-119-0	4BG1	4	105.040	107.000	112.800	1.400	203.100
17	5-11261-004-0	6BB1	6	102.040	105.000	112.000	1.400	204.000
18	5-11261-004-0	6BD1	6	102.040	105.000	112.000	1.400	204.000
19	1-11261-119-0	6BG1	6	105.040	107.000	112.800	1.400	203.100
20	1-11261-119-0	6BF1	6	105.040	107.000	112.800	1.400	203.100



◀ Cylinder Liners & Sleeves



- Wet Cylinder Liner
- Dry Cylinder Liner
- Phosphate Coating Liner
- Cast Iron Cylinder Liner

- Centrifugally Cast cylinder liner liners & sleeves with precise machining.
- We produce more than 1200 various models of cylinder liners for truck, Tractors and Cars worldwide.
- Manufactured with isFG220/ASTM material specification with chromium & nickel elements
- 25000 pieces Production Capacity of cylinder liners per month.
- Micro structure & chemical composition analysis of each and every batch.
- 100% Dimensional inspection of finished cylinder liners.
- Fine Plateau Honed cylinder liner bore.
- Randomly tensile strength and profiles.
- Cylindrical Grinding to archive geometrical parameters.
- Randomly inspection of honing angle and structure of cylinder liners.



◀ Cylinder Liners & Sleeves

Range, Specifications & Other Details

Technical Specifications

Material specification standards	
India	IS-FG 220
Europe	GG20, GG25, GG30
American	ASTM, A48

Product Specifications

Dimension	Range (in mm)
Bore Diameter	55 to 180
Outer Diameter	60 to 250
Total Length	110 to 300

Micro Structure

Chemical Composition	Minimum	Maximum
Carbon	2.90	3.50
Silicon	1.80	2.50
Manganese	0.6	1.00
Phosphorus	0.20	0.50
Sulfur	0.00	0.12

Note: Also we can add cast material compositions using Chromium, Molybdenum, Nickel, Cooper as per customer specifications meeting to international standards.

Hardness (BHN)	210 to 280
Tensile (BHN)	210 to 280 n/mm ²

Graphite type: "A" & "B" ("D" & "E" Random)
Flake Size: 4-6 Microns
Matrix: Lamellar Pearlite
Free Ferrite: Less Than 5%



◀ Air Cooled Block



- Finned Cylinder Liner
- Air Cooled Cylinder Liner
- Water Cooled Cylinder Liner

Golden International is a leading supplier of air & water cooled cylinder blocks for tractors, cars, compressors, stationery diesel engines, commercial vehicles, two & three wheelers etc. All our cylinder blocks are made exactly as per OE specifications. Golden International manufactures more than 100 different models of air & water cooled cylinder blocks. Golden International cylinder blocks are manufactured under strict quality and management standards in order to maintain our reputation for excellence and to keep providing our worldwide patronage with premium quality, highly durable and longer lasting cylinder blocks.

Specifications & Other Details

Product Specifications

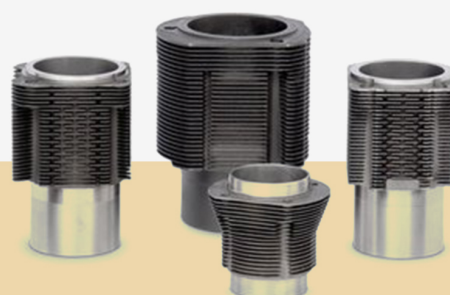
Dimension	Range (in mm)
Bore dia.	38 to 230
Total length	75 to 300

Production Capacity

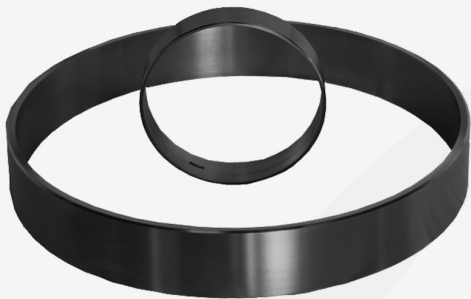
10000 pieces per month

Finishes

Semi-finished & fully-finished



◀ Anti-Polishing Ring



These are available in wide range suitable for light, medium and heavy duty application. Anti-Polishing Ring are 'cast-in fit', force (press) fit or slip fit. The interference between its outer diameter and bore-hole walls depends on fit-type from 0.050 to 0.100 mm. Anti-Polishing Ring, made of grey cast-iron, ought to have desired casting and machining qualities, viz. strength, toughness, hardness and wear resistance.

Product Specifications

Dimension	Range (in mm)
OD dia.	50 to 350
Material	Cast Iron, SS





Manufacture & Exporter For CYLINDER LINER & SLEEVES

- **Address :** Somnath industrial area-2, Shade No. - 1 plot No. - 7
Near Active pumps And krish Hydraulic,
Dhebar Road Kothariya
Rajkot-360022.
- **Contact No. :** +91 9664706805 / +91 9824876215
- **E-mail :** info@goldenint.in / sales@goldenint.in
- **Website :** www.goldenint.in

